

ISLE OF ANGLESEY COUNTY COUNCIL

| | |
|-------------------|--|
| Committee: | Partnership and Regeneration Scrutiny Committee |
| Date: | 28 November 2013 |
| Title: | Update on Partnership Unit matters |
| Author: | Trystan Pritchard, Senior Partnerships Manager |

1.0 Purpose of Report

1.1 Following an initial presentation to the committee on 25th July 2013, members requested further information on the partnership structures and financial arrangements including grant allocation. This report provides further information on these issues and outlines progress to date on the development of a Single Integrated Plan for Anglesey and Gwynedd.

2.0 Financial Arrangements

2.1 Current Partnership budget

Partnership Unit Staff Budget:

Total budget: £732,585

Core Staff budget: £475,278

Grant staff budget: £257,307

Anglesey contribution to core staff budget at 47%: £223,380

Partnership Unit Non-staff Budget:

Total non-staff budget: £53,175

Anglesey contribution at 47%: £25,000

Current Total Grant Allocation received: £ 1,575,485.72

2.2 Breakdown by specialist area

Children and Young People

Staff grant budget (2 counties): £27,626

Non-staff grant budget (Families First Grant): £840,236

Community Safety

Total Staff grant budget (2 counties): £143,753

Total grant budget for Anglesey: £725, 249.72

Breakdown by field:

Substance Misuse (Anglesey) £527,943.00

Grant to be administered as a regional resource from 2014/15

Police and Crime Commissioner's Grant (Anglesey) £27,173.00

Youth Crime Prevention , Welsh Government: £132,633.72
(to be administered as a regional resource from 2014/15)

Domestic Violence – Welsh Government (Anglesey) £37,500

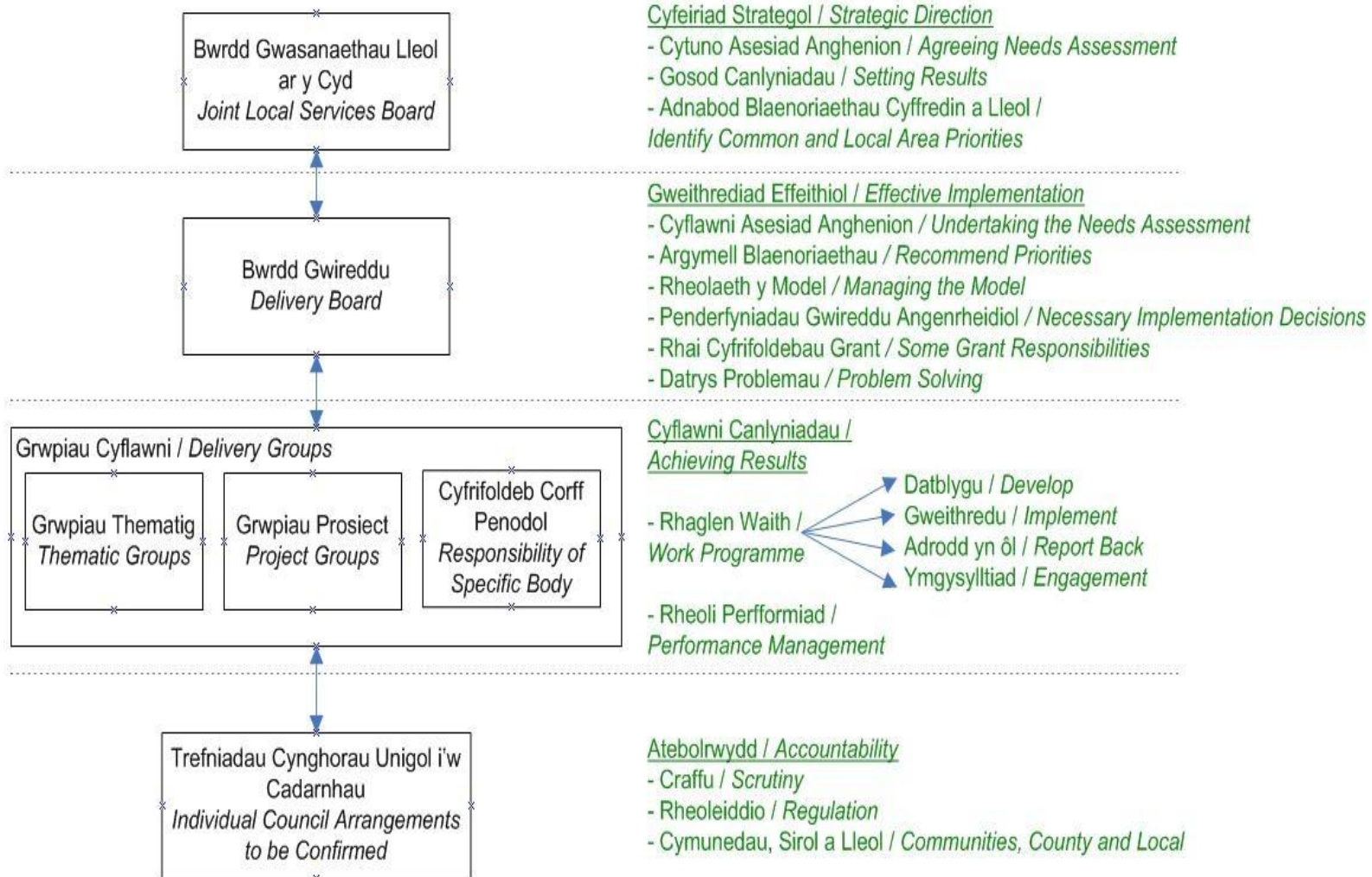
Health, Social Care and Wellbeing

Staff grant budget (2 counties): £61,156

Non-staff grant budget: £10,000 - Public Health Wales

3.0 Local Service Board Reporting Structure

3.1 The diagram below outlines the role of the Local Service Board and its reporting structure.



4.0 Development of Single Integrated Plan

4.1 An initial draft of the plan has now been completed following engagement with council departments, partner organisations and the third sector. The priority areas for health, poverty and Welsh language have been agreed with further work required to refine priorities in the areas of economic development and children and young people.

4.2 The Energy Island programme is a core consideration and discussions are ongoing to ensure the plan provides a strategic direction to ensure that the social, economic and environmental benefits are maximised whilst ensuring sustainable development and community resilience.

4.3 Further engagement with the wider public via the Lleisiau Lleol project is ongoing with workshops arranged for 12th December.

4.4 Following this exercise a refined version will be presented to the Partnership and Regeneration Scrutiny Committee for discussion. The Chair will be asked to advise as to the format and possible date for this discussion.

5.0 Recommendations

5.1 The committee is asked to:

- (i) Note the contents of the report
- (ii) Provide a view on the preferred arrangements for discussing and approving the Single Integrated Plan

Report by: Trystan Pritchard

Job Title: Senior Partnerships Manager (Anglesey and Gwynedd)

Date: 11/11/13